

# Letter of Authenticity

Wednesday, January 04, 2023

Photograph Certification: 1P16557

Photograph Type: Type II  
Photo Genre: Photograph  
Issuer: 733548 Ontario Limited/David Conover  
Era/Circa/Year: c. 1990  
Subject: Norma Jeane/Marilyn Monroe  
Size: a. 20" x 24"  
Comments: Photo is a later-issued 1990 restrike that was made off the original transparency featuring an image originally taken by David Conover in 1945.



To Whom It May Concern:

PSA/DNA Authentication Services has examined this Norma Jeane/Marilyn Monroe photograph. In our opinion, the aforementioned item is authentic.

The characteristics of the image, paper stock, reverse stamping(s) or notations are consistent with those of a TYPE II photograph.

As part of the authentication process, a tamper-evident label containing a unique alphanumeric certification number has been placed on the item or on this Letter of Authenticity.

Verify the validity of the certification number and exact image at [PSACard.com/DNAcert](http://PSACard.com/DNAcert).

Sincerely,



## ©Photograph Type Classification

**Type I** – A 1st generation photograph, developed from the original negative, during the period (within approximately two years of when the picture was taken).

**Type II** – A photograph, developed, from the original negative, during a later period (more than approximately two years after the picture was taken).

**Type III** – A 2nd generation photograph, developed from a duplicate negative or wire transmission, during the period (within approximately two years of when the picture was taken).

**Type IV** – A 2nd generation photograph (or 3rd or later generation), developed from a duplicate negative or wire transmission, during a later period (more than approximately two years after the picture was taken).

**On behalf of the PSA/DNA Photograph Authentication Team**

Henry Yec



Marshall Fogel

P.O. Box 6180, Newport Beach, CA 92658 • 800-325-1121 • [PSACard.com](http://PSACard.com)



# Letter of Authenticity

Wednesday, January 04, 2023

Photograph Certification: 1P16555

Photograph Type: Type II  
Photo Genre: Photograph  
Issuer: 733548 Ontario Limited/David Conover  
Era/Circa/Year: c. 1990  
Subject: Norma Jeane/Marilyn Monroe  
Size: a. 20" x 24"  
Comments: Photo is a later-issued 1990 restrrike that was made off the original transparency featuring an image originally taken by David Conover in 1945.



To Whom It May Concern:

PSA/DNA Authentication Services has examined this Norma Jeane/Marilyn Monroe photograph. In our opinion, the aforementioned item is authentic.

The characteristics of the image, paper stock, reverse stamping(s) or notations are consistent with those of a TYPE II photograph.

As part of the authentication process, a tamper-evident label containing a unique alphanumeric certification number has been placed on the item or on this Letter of Authenticity.

Verify the validity of the certification number and exact image at [PSACard.com/DNAcert](http://PSACard.com/DNAcert).

Sincerely,



## ©Photograph Type Classification

**Type I** – A 1st generation photograph, developed from the original negative, during the period (within approximately two years of when the picture was taken).

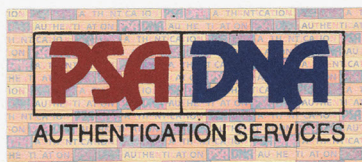
**Type II** – A photograph, developed, from the original negative, during a later period (more than approximately two years after the picture was taken).

**Type III** – A 2nd generation photograph, developed from a duplicate negative or wire transmission, during the period (within approximately two years of when the picture was taken).

**Type IV** – A 2nd generation photograph (or 3rd or later generation), developed from a duplicate negative or wire transmission, during a later period (more than approximately two years after the picture was taken).

**On behalf of the PSA/DNA Photograph Authentication Team**

Henry Yee



Marshall Fogel

P.O. Box 6180, Newport Beach, CA 92658 • 800-325-1121 • [PSACard.com](http://PSACard.com)



# Letter of Authenticity

Wednesday, January 04, 2023

Photograph Certification: 1P16559

Photograph Type: Type II  
Photo Genre: Photograph  
Issuer: 733548 Ontario Limited/David Conover  
Era/Circa/Year: c. 1990  
Subject: Norma Jeane/Marilyn Monroe  
Size: a. 20" x 24"  
Comments: Photo is a later-issued 1990 restrrike that was made off the original transparency featuring an image originally taken by David Conover in 1945.



To Whom It May Concern:

PSA/DNA Authentication Services has examined this Norma Jeane/Marilyn Monroe photograph. In our opinion, the aforementioned item is authentic.

The characteristics of the image, paper stock, reverse stamping(s) or notations are consistent with those of a TYPE II photograph.

As part of the authentication process, a tamper-evident label containing a unique alphanumeric certification number has been placed on the item or on this Letter of Authenticity.

Verify the validity of the certification number and exact image at [PSACard.com/DNAcert](http://PSACard.com/DNAcert).

Sincerely,

A handwritten signature in blue ink, appearing to be 'M' or similar initials.



## ©Photograph Type Classification

**Type I** – A 1st generation photograph, developed from the original negative, during the period (within approximately two years of when the picture was taken).

**Type II** – A photograph, developed, from the original negative, during a later period (more than approximately two years after the picture was taken).

**Type III** – A 2nd generation photograph, developed from a duplicate negative or wire transmission, during the period (within approximately two years of when the picture was taken).

**Type IV** – A 2nd generation photograph (or 3rd or later generation), developed from a duplicate negative or wire transmission, during a later period (more than approximately two years after the picture was taken).

**On behalf of the PSA/DNA Photograph Authentication Team**

A handwritten signature in black ink, appearing to be 'Henry Yee'.

Henry Yee

A handwritten signature in black ink, appearing to be 'Marshall Fogel'.

Marshall Fogel

P.O. Box 6180, Newport Beach, CA 92658 • 800-325-1121 • [PSACard.com](http://PSACard.com)



# Letter of Authenticity

Wednesday, January 04, 2023

Photograph Certification: 1P16560

Photograph Type: Type II  
Photo Genre: Photograph  
Issuer: 733548 Ontario Limited/David Conover  
Era/Circa/Year: c. 1990  
Subject: Norma Jeane/Marilyn Monroe  
Size: a. 20" x 24"  
Comments: Photo is a later-issued 1990 restrrike that was made off the original transparency featuring an image originally taken by David Conover in 1945.



To Whom It May Concern:

PSA/DNA Authentication Services has examined this Norma Jeane/Marilyn Monroe photograph. In our opinion, the aforementioned item is authentic.

The characteristics of the image, paper stock, reverse stamping(s) or notations are consistent with those of a TYPE II photograph.

As part of the authentication process, a tamper-evident label containing a unique alphanumeric certification number has been placed on the item or on this Letter of Authenticity.

Verify the validity of the certification number and exact image at [PSACard.com/DNAcert](http://PSACard.com/DNAcert).

Sincerely,



## ©Photograph Type Classification

**Type I** – A 1st generation photograph, developed from the original negative, during the period (within approximately two years of when the picture was taken).

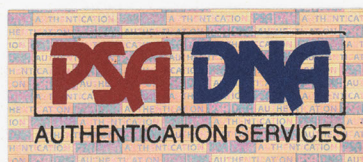
**Type II** – A photograph, developed, from the original negative, during a later period (more than approximately two years after the picture was taken).

**Type III** – A 2nd generation photograph, developed from a duplicate negative or wire transmission, during the period (within approximately two years of when the picture was taken).

**Type IV** – A 2nd generation photograph (or 3rd or later generation), developed from a duplicate negative or wire transmission, during a later period (more than approximately two years after the picture was taken).

**On behalf of the PSA/DNA Photograph Authentication Team**

Henry Yee



Marshall Fogel

P.O. Box 6180, Newport Beach, CA 92658 • 800-325-1121 • [PSACard.com](http://PSACard.com)



# Letter of Authenticity

Wednesday, January 04, 2023

Photograph Certification: 1P16562

Photograph Type: Type II  
Photo Genre: Photograph  
Issuer: 733548 Ontario Limited/David Conover  
Era/Circa/Year: c. 1990  
Subject: Norma Jeane/Marilyn Monroe  
Size: a. 20" x 24"  
Comments: Photo is a later-issued 1990 restrike that was made off the original transparency featuring an image originally taken by David Conover in 1945.



To Whom It May Concern:

PSA/DNA Authentication Services has examined this Norma Jeane/Marilyn Monroe photograph. In our opinion, the aforementioned item is authentic.

The characteristics of the image, paper stock, reverse stamping(s) or notations are consistent with those of a TYPE II photograph.

As part of the authentication process, a tamper-evident label containing a unique alphanumeric certification number has been placed on the item or on this Letter of Authenticity.

Verify the validity of the certification number and exact image at [PSACard.com/DNAcert](http://PSACard.com/DNAcert).

Sincerely,



## ©Photograph Type Classification

**Type I** – A 1st generation photograph, developed from the original negative, during the period (within approximately two years of when the picture was taken).

**Type II** – A photograph, developed, from the original negative, during a later period (more than approximately two years after the picture was taken).

**Type III** – A 2nd generation photograph, developed from a duplicate negative or wire transmission, during the period (within approximately two years of when the picture was taken).

**Type IV** – A 2nd generation photograph (or 3rd or later generation), developed from a duplicate negative or wire transmission, during a later period (more than approximately two years after the picture was taken).

**On behalf of the PSA/DNA Photograph Authentication Team**

Henry Yee



Marshall Fogel

P.O. Box 6180, Newport Beach, CA 92658 • 800-325-1121 • [PSACard.com](http://PSACard.com)



# Letter of Authenticity

Wednesday, January 04, 2023

Photograph Certification: 1P16564

Photograph Type: Type II  
Photo Genre: Photograph  
Issuer: 733548 Ontario Limited/David Conover  
Era/Circa/Year: c. 1990  
Subject: Norma Jeane/Marilyn Monroe  
Size: a. 20" x 24"  
Comments: Photo is a later-issued 1990 restrike that was made off the original transparency featuring an image originally taken by David Conover in 1945.



To Whom It May Concern:

PSA/DNA Authentication Services has examined this Norma Jeane/Marilyn Monroe photograph. In our opinion, the aforementioned item is authentic.

The characteristics of the image, paper stock, reverse stamping(s) or notations are consistent with those of a TYPE II photograph.

As part of the authentication process, a tamper-evident label containing a unique alphanumeric certification number has been placed on the item or on this Letter of Authenticity.

Verify the validity of the certification number and exact image at [PSACard.com/DNAcert](http://PSACard.com/DNAcert).

Sincerely,



## ©Photograph Type Classification

**Type I** – A 1st generation photograph, developed from the original negative, during the period (within approximately two years of when the picture was taken).

**Type II** – A photograph, developed, from the original negative, during a later period (more than approximately two years after the picture was taken).

**Type III** – A 2nd generation photograph, developed from a duplicate negative or wire transmission, during the period (within approximately two years of when the picture was taken).

**Type IV** – A 2nd generation photograph (or 3rd or later generation), developed from a duplicate negative or wire transmission, during a later period (more than approximately two years after the picture was taken).

**On behalf of the PSA/DNA Photograph Authentication Team**

Henry Yee



Marshall Fogel

P.O. Box 6180, Newport Beach, CA 92658 • 800-325-1121 • [PSACard.com](http://PSACard.com)



# Letter of Authenticity

Wednesday, January 04, 2023

Photograph Certification: 1P16563

Photograph Type: Type II  
Photo Genre: Photograph  
Issuer: 733548 Ontario Limited/David Conover  
Era/Circa/Year: c. 1990  
Subject: Norma Jeane/Marilyn Monroe  
Size: a. 20" x 24"  
Comments: Photo is a later-issued 1990 restrike that was made off the original transparency featuring an image originally taken by David Conover in 1945.



To Whom It May Concern:

PSA/DNA Authentication Services has examined this Norma Jeane/Marilyn Monroe photograph. In our opinion, the aforementioned item is authentic.

The characteristics of the image, paper stock, reverse stamping(s) or notations are consistent with those of a TYPE II photograph.

As part of the authentication process, a tamper-evident label containing a unique alphanumeric certification number has been placed on the item or on this Letter of Authenticity.

Verify the validity of the certification number and exact image at [PSACard.com/DNAcert](http://PSACard.com/DNAcert).

Sincerely,



## ©Photograph Type Classification

**Type I** – A 1st generation photograph, developed from the original negative, during the period (within approximately two years of when the picture was taken).

**Type II** – A photograph, developed, from the original negative, during a later period (more than approximately two years after the picture was taken).

**Type III** – A 2nd generation photograph, developed from a duplicate negative or wire transmission, during the period (within approximately two years of when the picture was taken).

**Type IV** – A 2nd generation photograph (or 3rd or later generation), developed from a duplicate negative or wire transmission, during a later period (more than approximately two years after the picture was taken).

**On behalf of the PSA/DNA Photograph Authentication Team**

Henry Yee



Marshall Fogel

P.O. Box 6180, Newport Beach, CA 92658 • 800-325-1121 • [PSACard.com](http://PSACard.com)



# Letter of Authenticity

Wednesday, January 04, 2023

Photograph Certification: 1P16565

Photograph Type: Type II  
Photo Genre: Photograph  
Issuer: 733548 Ontario Limited/David Conover  
Era/Circa/Year: c. 1990  
Subject: Norma Jeane/Marilyn Monroe  
Size: a. 20" x 24"  
Comments: Photo is a later-issued 1990 restrrike that was made off the original transparency featuring an image originally taken by David Conover in 1945.



To Whom It May Concern:

PSA/DNA Authentication Services has examined this Norma Jeane / Marilyn Monroe photograph. In our opinion, the aforementioned item is authentic.

The characteristics of the image, paper stock, reverse stamping(s) or notations are consistent with those of a TYPE II photograph.

As part of the authentication process, a tamper-evident label containing a unique alphanumeric certification number has been placed on the item or on this Letter of Authenticity.

Verify the validity of the certification number and exact image at [PSACard.com/DNAcert](http://PSACard.com/DNAcert).

Sincerely,



## ©Photograph Type Classification

**Type I** – A 1st generation photograph, developed from the original negative, during the period (within approximately two years of when the picture was taken).

**Type II** – A photograph, developed, from the original negative, during a later period (more than approximately two years after the picture was taken).

**Type III** – A 2nd generation photograph, developed from a duplicate negative or wire transmission, during the period (within approximately two years of when the picture was taken).

**Type IV** – A 2nd generation photograph (or 3rd or later generation), developed from a duplicate negative or wire transmission, during a later period (more than approximately two years after the picture was taken).

**On behalf of the PSA/DNA Photograph Authentication Team**

Henry Yee



Marshall Fogel

P.O. Box 6180, Newport Beach, CA 92658 • 800-325-1121 • [PSACard.com](http://PSACard.com)



# Letter of Authenticity

Wednesday, January 04, 2023

Photograph Certification: 1P16566

Photograph Type: Type II  
Photo Genre: Photograph  
Issuer: 733548 Ontario Limited/David Conover  
Era/Circa/Year: c. 1990  
Subject: Norma Jeane/Marilyn Monroe  
Size: a. 20" x 24"  
Comments: Photo is a later-issued 1990 restrrike that was made off the original transparency featuring an image originally taken by David Conover in 1945.



To Whom It May Concern:

PSA/DNA Authentication Services has examined this Norma Jeane/Marilyn Monroe photograph. In our opinion, the aforementioned item is authentic.

The characteristics of the image, paper stock, reverse stamping(s) or notations are consistent with those of a TYPE II photograph.

As part of the authentication process, a tamper-evident label containing a unique alphanumeric certification number has been placed on the item or on this Letter of Authenticity.

Verify the validity of the certification number and exact image at [PSACard.com/DNAcert](http://PSACard.com/DNAcert).

Sincerely,



## ©Photograph Type Classification

**Type I** – A 1st generation photograph, developed from the original negative, during the period (within approximately two years of when the picture was taken).

**Type II** – A photograph, developed, from the original negative, during a later period (more than approximately two years after the picture was taken).

**Type III** – A 2nd generation photograph, developed from a duplicate negative or wire transmission, during the period (within approximately two years of when the picture was taken).

**Type IV** – A 2nd generation photograph (or 3rd or later generation), developed from a duplicate negative or wire transmission, during a later period (more than approximately two years after the picture was taken).

**On behalf of the PSA/DNA Photograph Authentication Team**

Henry Yee



Marshall Fogel

P.O. Box 6180, Newport Beach, CA 92658 • 800-325-1121 • [PSACard.com](http://PSACard.com)



# Letter of Authenticity

Wednesday, January 04, 2023

Photograph Certification: 1P16568

Photograph Type: Type II  
Photo Genre: Photograph  
Issuer: 733548 Ontario Limited/David Conover  
Era/Circa/Year: c. 1990  
Subject: Norma Jeane/Marilyn Monroe  
Size: a. 20" x 24"  
Comments: Photo is a later-issued 1990 restrrike that was made off the original transparency featuring an image originally taken by David Conover in 1945.



To Whom It May Concern:

PSA/DNA Authentication Services has examined this Norma Jeane/Marilyn Monroe photograph. In our opinion, the aforementioned item is authentic.

The characteristics of the image, paper stock, reverse stamping(s) or notations are consistent with those of a TYPE II photograph.

As part of the authentication process, a tamper-evident label containing a unique alphanumeric certification number has been placed on the item or on this Letter of Authenticity.

Verify the validity of the certification number and exact image at [PSACard.com/DNAcert](http://PSACard.com/DNAcert).

Sincerely,



## ©Photograph Type Classification

**Type I** – A 1st generation photograph, developed from the original negative, during the period (within approximately two years of when the picture was taken).

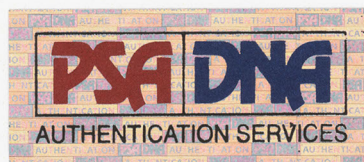
**Type II** – A photograph, developed, from the original negative, during a later period (more than approximately two years after the picture was taken).

**Type III** – A 2nd generation photograph, developed from a duplicate negative or wire transmission, during the period (within approximately two years of when the picture was taken).

**Type IV** – A 2nd generation photograph (or 3rd or later generation), developed from a duplicate negative or wire transmission, during a later period (more than approximately two years after the picture was taken).

**On behalf of the PSA/DNA Photograph Authentication Team**

Henry Yee



Marshall Fogel

P.O. Box 6180, Newport Beach, CA 92658 • 800-325-1121 • [PSACard.com](http://PSACard.com)



# Letter of Authenticity

Wednesday, January 04, 2023

Photograph Certification: 1P16567

Photograph Type: Type II  
Photo Genre: Photograph  
Issuer: 733548 Ontario Limited/David Conover  
Era/Circa/Year: c. 1990  
Subject: Norma Jeane/Marilyn Monroe  
Size: a. 20" x 24"  
Comments: Photo is a later-issued 1990 restrike that was made off the original transparency featuring an image originally taken by David Conover in 1945.



To Whom It May Concern:

PSA/DNA Authentication Services has examined this Norma Jeane/Marilyn Monroe photograph. In our opinion, the aforementioned item is authentic.

The characteristics of the image, paper stock, reverse stamping(s) or notations are consistent with those of a TYPE II photograph.

As part of the authentication process, a tamper-evident label containing a unique alphanumeric certification number has been placed on the item or on this Letter of Authenticity.

Verify the validity of the certification number and exact image at [PSACard.com/DNAcert](http://PSACard.com/DNAcert).

Sincerely,



## ©Photograph Type Classification

**Type I** – A 1st generation photograph, developed from the original negative, during the period (within approximately two years of when the picture was taken).

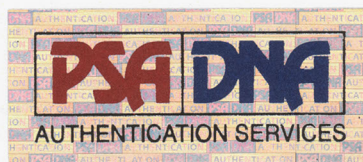
**Type II** – A photograph, developed, from the original negative, during a later period (more than approximately two years after the picture was taken).

**Type III** – A 2nd generation photograph, developed from a duplicate negative or wire transmission, during the period (within approximately two years of when the picture was taken).

**Type IV** – A 2nd generation photograph (or 3rd or later generation), developed from a duplicate negative or wire transmission, during a later period (more than approximately two years after the picture was taken).

**On behalf of the PSA/DNA Photograph Authentication Team**

Henry Yee



Marshall Fogel

P.O. Box 6180, Newport Beach, CA 92658 • 800-325-1121 • [PSACard.com](http://PSACard.com)



# Letter of Authenticity

Wednesday, January 04, 2023

Photograph Certification: 1P16569

Photograph Type: Type II  
Photo Genre: Photograph  
Issuer: 733548 Ontario Limited/David Conover  
Era/Circa/Year: c. 1990  
Subject: Norma Jeane/Marilyn Monroe  
Size: a. 20" x 24"  
Comments: Photo is a later-issued 1990 restrike that was made off the original transparency featuring an image originally taken by David Conover in 1945.



To Whom It May Concern:

PSA/DNA Authentication Services has examined this Norma Jeane/Marilyn Monroe photograph. In our opinion, the aforementioned item is authentic.

The characteristics of the image, paper stock, reverse stamping(s) or notations are consistent with those of a TYPE II photograph.

As part of the authentication process, a tamper-evident label containing a unique alphanumeric certification number has been placed on the item or on this Letter of Authenticity.

Verify the validity of the certification number and exact image at [PSACard.com/DNAcert](http://PSACard.com/DNAcert).

Sincerely,



## ©Photograph Type Classification

**Type I** – A 1st generation photograph, developed from the original negative, during the period (within approximately two years of when the picture was taken).

**Type II** – A photograph, developed, from the original negative, during a later period (more than approximately two years after the picture was taken).

**Type III** – A 2nd generation photograph, developed from a duplicate negative or wire transmission, during the period (within approximately two years of when the picture was taken).

**Type IV** – A 2nd generation photograph (or 3rd or later generation), developed from a duplicate negative or wire transmission, during a later period (more than approximately two years after the picture was taken).

**On behalf of the PSA/DNA Photograph Authentication Team**

Henry Yee



Marshall Fogel

P.O. Box 6180, Newport Beach, CA 92658 • 800-325-1121 • [PSACard.com](http://PSACard.com)



# Letter of Authenticity

Wednesday, January 04, 2023

Photograph Certification: 1P16570

Photograph Type: Type II  
Photo Genre: Photograph  
Issuer: 733548 Ontario Limited/David Conover  
Era/Circa/Year: c. 1990  
Subject: Norma Jeane/Marilyn Monroe  
Size: a. 20" x 24"  
Comments: Photo is a later-issued 1990 restrrike that was made off the original transparency featuring an image originally taken by David Conover in 1945.



To Whom It May Concern:

PSA/DNA Authentication Services has examined this Norma Jeane/Marilyn Monroe photograph. In our opinion, the aforementioned item is authentic.

The characteristics of the image, paper stock, reverse stamping(s) or notations are consistent with those of a TYPE II photograph.

As part of the authentication process, a tamper-evident label containing a unique alphanumeric certification number has been placed on the item or on this Letter of Authenticity.

Verify the validity of the certification number and exact image at [PSACard.com/DNAcert](http://PSACard.com/DNAcert).

Sincerely,



## ©Photograph Type Classification

**Type I** – A 1st generation photograph, developed from the original negative, during the period (within approximately two years of when the picture was taken).

**Type II** – A photograph, developed, from the original negative, during a later period (more than approximately two years after the picture was taken).

**Type III** – A 2nd generation photograph, developed from a duplicate negative or wire transmission, during the period (within approximately two years of when the picture was taken).

**Type IV** – A 2nd generation photograph (or 3rd or later generation), developed from a duplicate negative or wire transmission, during a later period (more than approximately two years after the picture was taken).

**On behalf of the PSA/DNA Photograph Authentication Team**

Henry Yee



Marshall Fogel

P.O. Box 6180, Newport Beach, CA 92658 • 800-325-1121 • [PSACard.com](http://PSACard.com)



# Letter of Authenticity

Wednesday, January 04, 2023

Photograph Certification: 1P16556

Photograph Type: Type II  
Photo Genre: Photograph  
Issuer: 733548 Ontario Limited/David Conover  
Era/Circa/Year: c. 1990  
Subject: Norma Jeane/Marilyn Monroe  
Size: a. 20" x 24"  
Comments: Photo is a later-issued 1990 restrike that was made off the original negative featuring an image originally taken by David Conover in 1945.



To Whom It May Concern:

PSA/DNA Authentication Services has examined this Norma Jeane/Marilyn Monroe photograph. In our opinion, the aforementioned item is authentic.

The characteristics of the image, paper stock, reverse stamping(s) or notations are consistent with those of a TYPE II photograph.

As part of the authentication process, a tamper-evident label containing a unique alphanumeric certification number has been placed on the item or on this Letter of Authenticity.

Verify the validity of the certification number and exact image at [PSACard.com/DNAcert](http://PSACard.com/DNAcert).

Sincerely,



## ©Photograph Type Classification

**Type I** – A 1st generation photograph, developed from the original negative, during the period (within approximately two years of when the picture was taken).

**Type II** – A photograph, developed, from the original negative, during a later period (more than approximately two years after the picture was taken).

**Type III** – A 2nd generation photograph, developed from a duplicate negative or wire transmission, during the period (within approximately two years of when the picture was taken).

**Type IV** – A 2nd generation photograph (or 3rd or later generation), developed from a duplicate negative or wire transmission, during a later period (more than approximately two years after the picture was taken).

**On behalf of the PSA/DNA Photograph Authentication Team**

Henry Yee



Marshall Fogel

P.O. Box 6180, Newport Beach, CA 92658 • 800-325-1121 • [PSACard.com](http://PSACard.com)



# Letter of Authenticity

Wednesday, January 04, 2023

Photograph Certification: 1P16571

Photograph Type: Type II  
Photo Genre: Photograph  
Issuer: 733548 Ontario Limited/David Conover  
Era/Circa/Year: c. 1990  
Subject: Norma Jeane/Marilyn Monroe  
Size: a. 20" x 24"  
Comments: Photo is a later-issued 1990 restrike that was made off the original transparency featuring an image originally taken by David Conover in 1945.



To Whom It May Concern:

PSA/DNA Authentication Services has examined this Norma Jeane/Marilyn Monroe photograph. In our opinion, the aforementioned item is authentic.

The characteristics of the image, paper stock, reverse stamping(s) or notations are consistent with those of a TYPE II photograph.

As part of the authentication process, a tamper-evident label containing a unique alphanumeric certification number has been placed on the item or on this Letter of Authenticity.

Verify the validity of the certification number and exact image at [PSACard.com/DNAcert](http://PSACard.com/DNAcert).

Sincerely,



## ©Photograph Type Classification

**Type I** – A 1st generation photograph, developed from the original negative, during the period (within approximately two years of when the picture was taken).

**Type II** – A photograph, developed, from the original negative, during a later period (more than approximately two years after the picture was taken).

**Type III** – A 2nd generation photograph, developed from a duplicate negative or wire transmission, during the period (within approximately two years of when the picture was taken).

**Type IV** – A 2nd generation photograph (or 3rd or later generation), developed from a duplicate negative or wire transmission, during a later period (more than approximately two years after the picture was taken).

**On behalf of the PSA/DNA Photograph Authentication Team**

Henry Yee



Marshall Fogel

P.O. Box 6180, Newport Beach, CA 92658 • 800-325-1121 • [PSACard.com](http://PSACard.com)



# Letter of Authenticity

Wednesday, January 04, 2023

Photograph Certification: 1P16554

Photograph Type: Type II  
Photo Genre: Photograph  
Issuer: 733548 Ontario Limited/David Conover  
Era/Circa/Year: c. 1990  
Subject: Norma Jeane/Marilyn Monroe  
Size: a. 20" x 24"  
Comments: Photo is a later-issued 1990 restrike that was made off the original transparency featuring an image originally taken by David Conover in 1945.



To Whom It May Concern:

PSA/DNA Authentication Services has examined this Norma Jeane/Marilyn Monroe photograph. In our opinion, the aforementioned item is authentic.

The characteristics of the image, paper stock, reverse stamping(s) or notations are consistent with those of a TYPE II photograph.

As part of the authentication process, a tamper-evident label containing a unique alphanumeric certification number has been placed on the item or on this Letter of Authenticity.

Verify the validity of the certification number and exact image at [PSACard.com/DNAcert](http://PSACard.com/DNAcert).

Sincerely,



## ©Photograph Type Classification

**Type I** – A 1st generation photograph, developed from the original negative, during the period (within approximately two years of when the picture was taken).

**Type II** – A photograph, developed, from the original negative, during a later period (more than approximately two years after the picture was taken).

**Type III** – A 2nd generation photograph, developed from a duplicate negative or wire transmission, during the period (within approximately two years of when the picture was taken).

**Type IV** – A 2nd generation photograph (or 3rd or later generation), developed from a duplicate negative or wire transmission, during a later period (more than approximately two years after the picture was taken).

**On behalf of the PSA/DNA Photograph Authentication Team**

Henry Yee



Marshall Fogel

P.O. Box 6180, Newport Beach, CA 92658 • 800-325-1121 • [PSACard.com](http://PSACard.com)



# Letter of Authenticity

Wednesday, January 04, 2023

Photograph Certification: 1P16561

Photograph Type: Type II  
Photo Genre: Photograph  
Issuer: 733548 Ontario Limited/David Conover  
Era/Circa/Year: c. 1990  
Subject: Norma Jeane/Marilyn Monroe  
Size: a. 20" x 24"  
Comments: Photo is a later-issued 1990 restrrike that was made off the original negative featuring an image originally taken by David Conover in 1945.



To Whom It May Concern:

PSA/DNA Authentication Services has examined this Norma Jeane/Marilyn Monroe photograph. In our opinion, the aforementioned item is authentic.

The characteristics of the image, paper stock, reverse stamping(s) or notations are consistent with those of a TYPE II photograph.

As part of the authentication process, a tamper-evident label containing a unique alphanumeric certification number has been placed on the item or on this Letter of Authenticity.

Verify the validity of the certification number and exact image at [PSACard.com/DNAcert](http://PSACard.com/DNAcert).

Sincerely,



## ©Photograph Type Classification

**Type I** – A 1st generation photograph, developed from the original negative, during the period (within approximately two years of when the picture was taken).

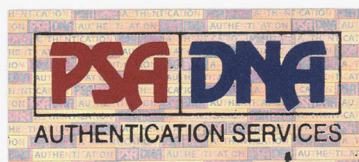
**Type II** – A photograph, developed, from the original negative, during a later period (more than approximately two years after the picture was taken).

**Type III** – A 2nd generation photograph, developed from a duplicate negative or wire transmission, during the period (within approximately two years of when the picture was taken).

**Type IV** – A 2nd generation photograph (or 3rd or later generation), developed from a duplicate negative or wire transmission, during a later period (more than approximately two years after the picture was taken).

**On behalf of the PSA/DNA Photograph Authentication Team**

Henry Yee



Marshall Fogel

P.O. Box 6180, Newport Beach, CA 92658 • 800-325-1121 • [PSACard.com](http://PSACard.com)



# Letter of Authenticity

Wednesday, January 04, 2023

Photograph Certification: 1P16558

Photograph Type: Type II  
Photo Genre: Photograph  
Issuer: 733548 Ontario Limited/David Conover  
Era/Circa/Year: c. 1990  
Subject: Norma Jeane/Marilyn Monroe  
Size: a. 20" x 24"  
Comments: Photo is a later-issued 1990 restrike that was made off the original negative featuring an image originally taken by David Conover in 1945.



To Whom It May Concern:

PSA/DNA Authentication Services has examined this Norma Jeane/Marilyn Monroe photograph. In our opinion, the aforementioned item is authentic.

The characteristics of the image, paper stock, reverse stamping(s) or notations are consistent with those of a TYPE II photograph.

As part of the authentication process, a tamper-evident label containing a unique alphanumeric certification number has been placed on the item or on this Letter of Authenticity.

Verify the validity of the certification number and exact image at [PSACard.com/DNAcert](http://PSACard.com/DNAcert).

Sincerely,



## ©Photograph Type Classification

**Type I** – A 1st generation photograph, developed from the original negative, during the period (within approximately two years of when the picture was taken).

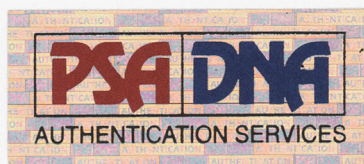
**Type II** – A photograph, developed, from the original negative, during a later period (more than approximately two years after the picture was taken).

**Type III** – A 2nd generation photograph, developed from a duplicate negative or wire transmission, during the period (within approximately two years of when the picture was taken).

**Type IV** – A 2nd generation photograph (or 3rd or later generation), developed from a duplicate negative or wire transmission, during a later period (more than approximately two years after the picture was taken).

**On behalf of the PSA/DNA Photograph Authentication Team**

Henry Yee



Marshall Fogel

P.O. Box 6180, Newport Beach, CA 92658 • 800-325-1121 • [PSACard.com](http://PSACard.com)